


Sullivan, A. L., Reinke, W., Sanetti, L., & Harris, B. (2013, February). *Successfully pursuing research funding: Perspectives from early and mid-career faculty*. Symposium at the annual convention of the National Association of School Psychologists, Seattle, WA.



Successfully Pursuing Research Funding: Perspectives from Early and Mid-Career Faculty

Wendy M. Reinke

Lisa Sanetti

Amanda Sullivan



Agenda

1. Introductions
2. Structured Questions
3. Q & A

Special thanks to Bryn Harris for her help in preparing discussion questions.

Sullivan, A. L., Reinke, W., Sanetti, L., & Harris, B. (2013, February). *Successfully pursuing research funding: Perspectives from early and mid-career faculty.* Symposium at the annual convention of the National Association of School Psychologists, Seattle, WA.

Wendy M. Reinke

- o Associate Professor
- o University of Missouri
- o Research Interests
 - o Prevention Science
 - o Disruptive Behavior Problems
 - o Evidence-based Practice
 - o Implementation Science
- o Funders
 - o Institute of Education Sciences
 - o National Institute of Mental Health
 - o University of Missouri Internal Research Funding
 - o Missouri Children's Trust Fund

Lisa M. Sanetti

- o Assistant Professor
- o University of Connecticut
- o Research Interests
 - o Implementation science
 - o Treatment integrity
 - o Evidence-based practice
- o Funders
 - o Institute of Education Sciences
 - o University of Connecticut Research Foundation

Sullivan, A. L., Reinke, W., Sanetti, L., & Harris, B. (2013, February). *Successfully pursuing research funding: Perspectives from early and mid-career faculty*. Symposium at the annual convention of the National Association of School Psychologists, Seattle, WA.

Amanda L. Sullivan

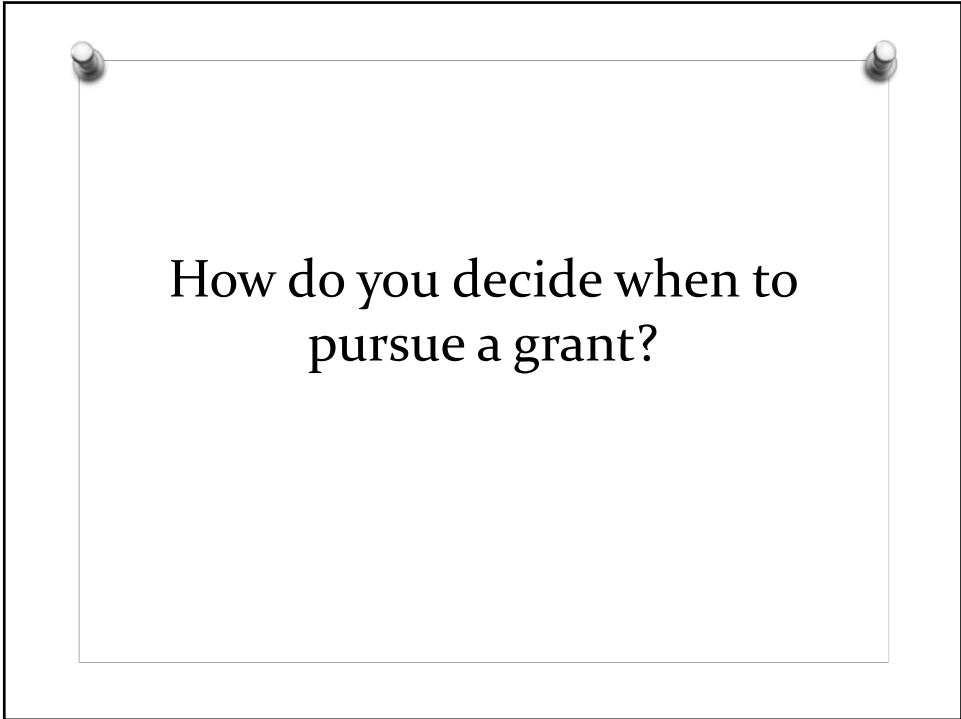
- o Assistant Professor
- o University of Minnesota
- o Research interests
 - o Education and health disparities
 - o Disability/special education inequity
 - o Secondary analysis
- o Funders
 - o Robert Wood Johnson Foundation
 - o American Educational Research Association
 - o Society of the Psychological Study of Social Issues
 - o University of Minnesota

What training did you receive to write grants?

Sullivan, A. L., Reinke, W., Sanetti, L., & Harris, B. (2013, February). *Successfully pursuing research funding: Perspectives from early and mid-career faculty*. Symposium at the annual convention of the National Association of School Psychologists, Seattle, WA.

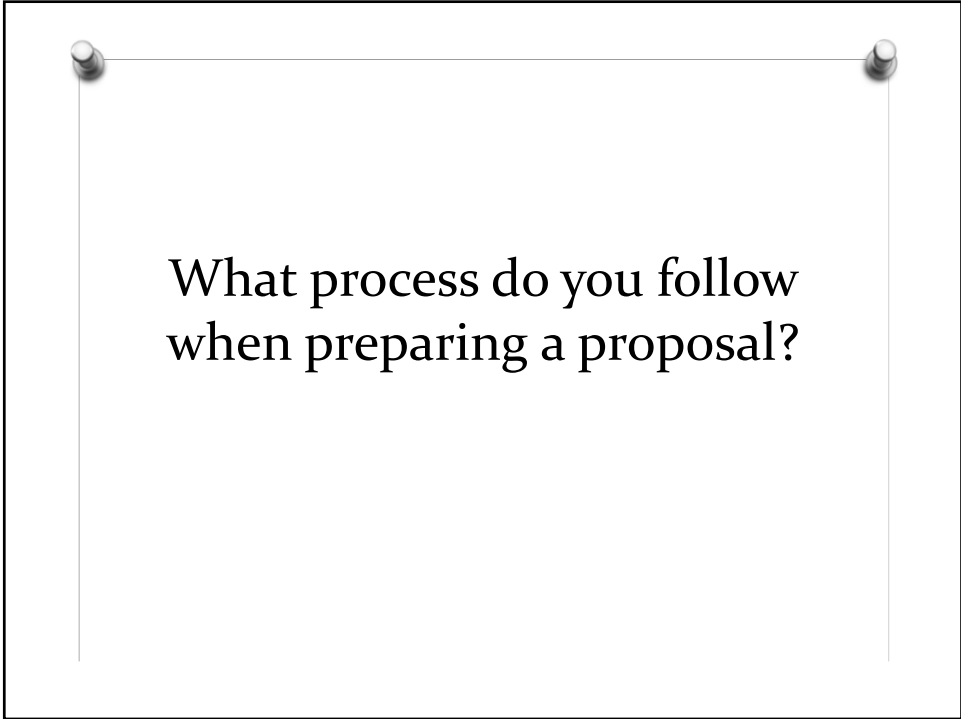


How do you identify
potential funding options?

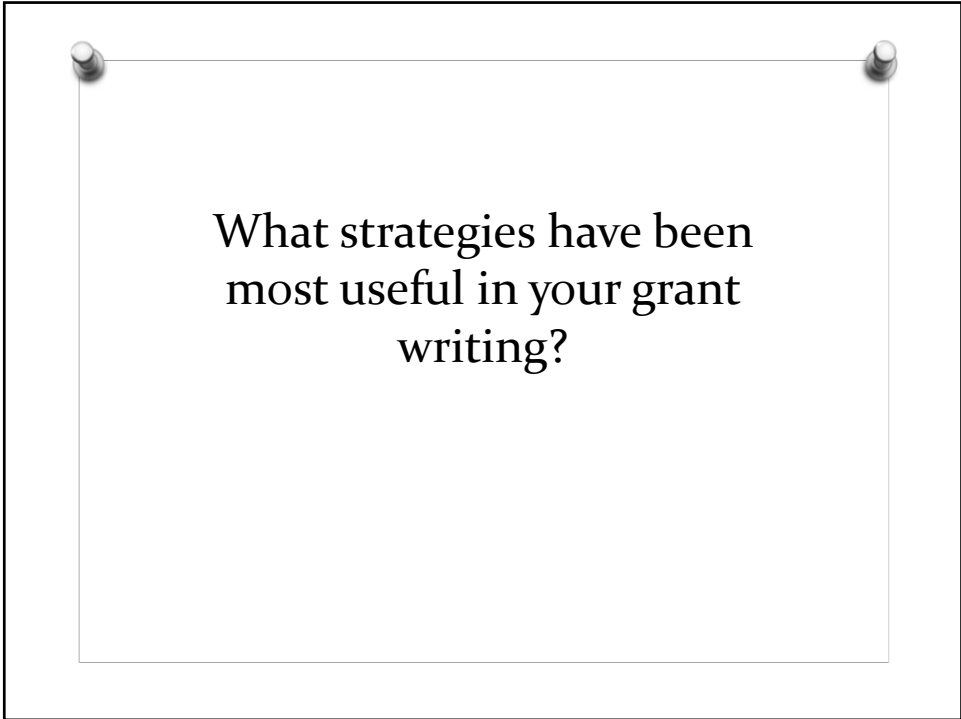


How do you decide when to
pursue a grant?

Sullivan, A. L., Reinke, W., Sanetti, L., & Harris, B. (2013, February). *Successfully pursuing research funding: Perspectives from early and mid-career faculty*. Symposium at the annual convention of the National Association of School Psychologists, Seattle, WA.

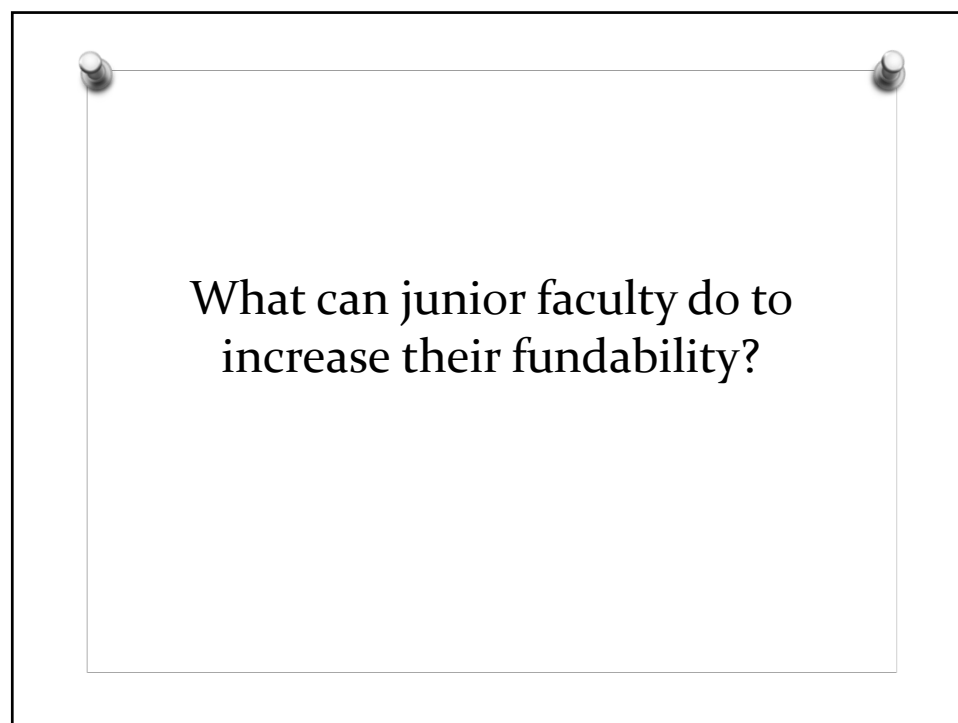
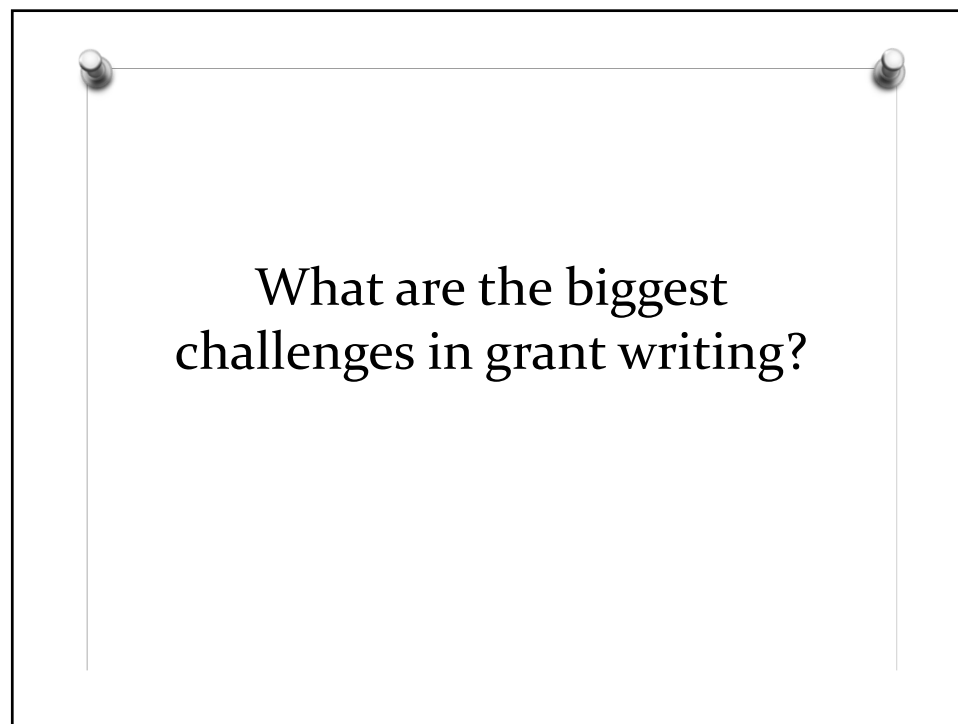


What process do you follow
when preparing a proposal?




What strategies have been
most useful in your grant
writing?

Sullivan, A. L., Reinke, W., Sanetti, L., & Harris, B. (2013, February). *Successfully pursuing research funding: Perspectives from early and mid-career faculty*. Symposium at the annual convention of the National Association of School Psychologists, Seattle, WA.



Sullivan, A. L., Reinke, W., Sanetti, L., & Harris, B. (2013, February). *Successfully pursuing research funding: Perspectives from early and mid-career faculty*. Symposium at the annual convention of the National Association of School Psychologists, Seattle, WA.



What can graduate students
do to gain experience in
funded research?



Questions?

Sullivan, A. L., Reinke, W., Sanetti, L., & Harris, B. (2013, February). *Successfully pursuing research funding: Perspectives from early and mid-career faculty*. Symposium at the annual convention of the National Association of School Psychologists, Seattle, WA.

Websites to Explore

- o **#1 – Your university.**
- o General
 - o <http://www.grants.gov/>
 - o <http://www.cos.com/>
 - o [APA Awards, Grants, and Scholarships](#)
 - o [AERA Fellowships and Research Grants](#)
 - o <http://sciencecareers.sciencemag.org/funding>
 - o <http://www.socialpsychology.org/funding.htm>
 - o [Yahoo.com Grant-Making Foundations](#)
 - o [Yahoo.com Education Grants](#)
- o For Graduate Students
 - o [NASP Awards, Grants, and Scholarships](#)
 - o <http://www.gdnet.ucla.edu/grpinst.htm>
 - o <http://www.students.gov>

Select Non-Profits

- o [MacArthur Foundation](#)
- o [The Spencer Foundation](#)
- o [William T. Grant Foundation](#)
- o [Lumina Foundation](#)
- o [Ford Foundation](#)
- o [Alfred P. Sloan Foundation](#)
- o [Joyce Foundation](#)
- o [The Teagle Foundation](#)
- o [The Chicago Community Trust](#)
- o [The Foundation Center](#)

Sullivan, A. L., Reinke, W., Sanetti, L., & Harris, B. (2013, February). *Successfully pursuing research funding: Perspectives from early and mid-career faculty*. Symposium at the annual convention of the National Association of School Psychologists, Seattle, WA.

Other Resources

- o <http://psych.ucr.edu/grad/GradStudentGuide2Funding.pdf>
- o <http://chronicle.com/article/Debunking-Some-Myths-About/45256>
- o <http://researchguides.library.wisc.edu/content.php?pid=16143&sid=108666>
- o <http://www.pitt.edu/~offres/proposal/propwriting/websites.html>
- o <http://www.tamtu.edu/gradschool/grant/writingtips.shtml>
- o <http://grantspace.org/>
- o Darley, J. M., Zanna, M. P. & Roediger, H. L. (Eds.). (2004) *The complete academic: A career guide* 2nd edition. Washington, DC: American Psychological Association.
- o Lucas, C. J., & Murry, J. W. (2002). *New Faculty: A practical guide for academic beginners*. New York: Palgrave.
- o Schoenfeld, A. C., & Magnan, R. (1994). *Mentor in a manual: Climbing the academic ladder to tenure*. Madison, WI: Magna Publications.